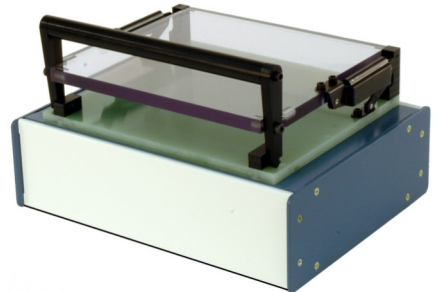


## Measurement Systems

### Overview

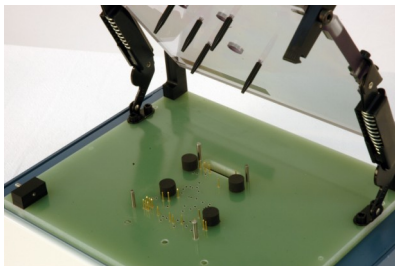
The Versi-Traq Test Fixture is an inexpensive Clamshell Bed-of-Nails fixture for use in custom test systems. The Test Fixture can be mounted on a standard Base Enclosure or on a customer supplied enclosure. The basic Versi-Traq Test Fixture is supplied undrilled.



### Versi-Traq Design Guide

Whether you are purchasing a bare Versi-Traq Test Fixture, a Ready-to-Wire Test Fixture, or a Wired-and-Tested Test Fixture, the Versi-Traq Design Guide provides the design information you need to build or specify the Test Fixture and design the circuit board so it can be tested.

Simply download the [Versi-Traq Design Guide \(DOC-00038\)](#).



### \*Ready-to-Wire

When purchasing Versi-Traq Test Fixtures, most customers prefer that Automatiq provide a complete Ready-to-Wire Test Fixture with holes drilled, pogo pins, guide pins, foam spacers, and push pins installed, and the Test Fixture mounted on a Base Enclosure. All this can be done with the Gerbers, a test point list, and a sample board. Fill out and submit the [Request for Quotation form \(SMD-00026\)](#) for a fixed price quotation.

### \*Wired-and-Tested

Automatiq can also provide the Versi-Traq Test Fixture with wiring from the sockets wired and tested. Fill out the [Request for Quotation form \(SMD-00026\)](#) and then contact Automatiq directly for price and delivery.

### Ordering Information

#### Versi-Traq Test Fixtures

The Versi-Traq Clamshell Bed-of-Nails Test Fixtures are available in various sizes.

See the individual fixtures for available area for circuit boards.



- Standard Versi-Traq Test Fixture 10.0" wide by 8.3" deep  
Suitable for 7.96" x 6.55" boards (8.50" x 5.50" boards with safety skirts):

Part Number: ASY00023.02  
Price: \$400.00  
Availability: Stock to 1 week  
Notes: Ready for drilling  
Requires Base Enclosure

- Wide Versi-Traq Test Fixture 14.0" wide by 8.3" deep  
Suitable for 11.96" x 6.55" boards (12.50" x 5.50" boards with safety skirts):

Part Number: ASY00023.03  
Price: \$500.00  
Availability: Stock to 1 week  
Notes: Ready for drilling  
Requires Base Enclosure

- Extra Wide Versi-Traq Test Fixture 16.0" wide by 8.3" deep  
Suitable for 13.96" x 6.55" boards (14.50" x 5.50" boards with safety skirts):

Part Number: ASY00023.04  
Price: \$550.00  
Availability: Stock to 1 week  
Notes: Ready for drilling  
Requires Base Enclosure

- Deep Versi-Traq Test Fixture 10.0" wide by 12.0" deep  
Suitable for 7.96" x 10.25" boards (8.50" x 9.125" boards with safety skirts):

Part Number: ASY00023.12  
Price: \$600.00  
Availability: Stock to 3 weeks  
Notes: Ready for drilling  
Requires Base Enclosure

- Deep and Wide Versi-Traq Test Fixture 14.0" wide by 12.0" deep  
Suitable for 11.96" x 10.25" boards (12.50" x 9.125" boards with safety skirts):

Part Number: ASY00023.13  
Price: \$700.00  
Availability: Stock to 3 weeks  
Notes: Ready for drilling  
Requires Base Enclosure

- Deep and Extra Wide Versi-Traq Test Fixture 16.0" wide by 12.0" deep  
Suitable for 13.96" x 10.25" boards (14.50" x 9.125" boards with safety skirts):

Part Number: ASY00023.14  
Price: \$750.00  
Availability: Stock to 3 weeks  
Notes: Ready for drilling  
Requires Base Enclosure

## Measurement Systems

### Base Enclosures

The Versi-Traq Test Fixture must be mounted on a base enclosure to house the Pogo Pin Sockets that stick down below the Probe Plate. The Test Fixture can be mounted on a standard Base Enclosure or on a customer supplied enclosure.

### Ordering Information

#### Versi-Traq Base Enclosures

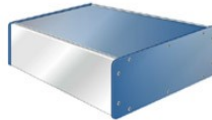
Automatiq provides a line of Base Enclosures for mounting the Versi-Traq Test Fixtures. They disassemble to separate Top, Bottom, Front, Back, and Sides for ease of machining for connectors, switches, lamps, etc. They come with the Top cutout for mounting the Versi-Traq Fixture.

#### 3.5" Versi-Traq Base Enclosures

The 3.5" height provides space for wiring and test circuitry inside at the expense of a elevated Test Fixture.

- Standard Versi-Traq Base (9" x 12" x 3.5"):

Part Number: ASY00025.02  
Price: \$200.00  
Availability: Stock to 1 week  
Notes: For ASY00023.02



- Deep Versi-Traq Base (14" x 12" x 3.5"):

Part Number: ASY00025.12  
Price: \$275.00  
Availability: Stock to 1 week  
Notes: For ASY00023.12

- Wide Versi-Traq Base (9" x 17" x 3.5"):

Part Number: ASY00025.03  
Price: \$250.00  
Availability: Stock to 1 week  
Notes: For ASY00023.03

- Deep & Wide Versi-Traq Base (14" x 17" x 3.5"):

Part Number: ASY00025.13  
Price: \$300.00  
Availability: Stock to 1 week  
Notes: For ASY00023.13

- Extra Wide Versi-Traq Base (9" x 17" x 3.5"):

Part Number: ASY00025.04  
Price: \$250.00  
Availability: Stock to 1 week  
Notes: For ASY00023.04

- Deep & Extra Wide Versi-Traq Base (14" x 17" x 3.5"):

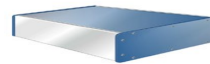
Part Number: ASY00025.14  
Price: \$300.00  
Availability: Stock to 1 week  
Notes: For ASY00023.14

#### 1.75" Versi-Traq Base Enclosures

The 1.75" height lowers the Test Fixture but it has no room for additional circuitry inside. It is limited to wiring to connectors on the back (1.3" high max).

- Shallow Versi-Traq Base (1.75" tall):

Part Number: ASY00030.xx  
Price: Same as 3.5" Base Enclosures  
Availability: Stock to 3 weeks  
Notes: For ASY00023.xx



### Versi-Traq Test Fixture Accessories

Automatiq can provide components for Versi-Traq Test Fixtures including pogo pins and sockets, push down pins, and foam spacers.

See the [Versi-Traq Components Data Sheet \(DOC-00036\)](#) for details.